

GAS HEATERS

Western's automatic gas heaters are designed to prevent regulator freeze-up and assure uniform temperature with constant gas flow at all times. All units are completely automatic and can be used with pressure up to 3000 PSIG. Highly recommended for use with Carbon Dioxide and Nitrous Oxide when withdrawal rates exceed 35 scfh. Requires 115 volts (AC).

PART #	DESCRIPTION	GAS SERVICE	CAPACITY
WME-3-4	Gas Heater	Carbon Dioxide (CGA-320)	1,000 scfh
WME-3-7	Gas Heater	Nitrous Oxide (CGA-326)	1,000 scfh
WHS-11	Manifold Adapter	Carbon Dioxide (CGA-320)	
WHS-12	Manifold Adapter	Nitrous Oxide (CGA-326)	

NOTE: To connect the heater to most Western manifold headers, manifold adapter WHS - 11 or WHS - 12 required.



PROPORTIONAL GAS MIXERS

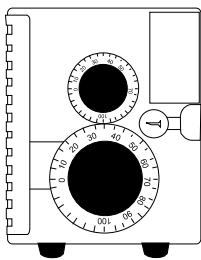
The Western Innovator proportional gas mixer is a pressure-flow device capable of blending two gases accurately in variable proportions from 0 - 100%. Two gas models are available to meet a wide range of MIG, TIG and Plasma applications in large industrial plants or small job shops. Western's gas proportioners eliminate the need for pre-mixed gases, thereby substantially reducing gas cost. For any selected proportion, the resultant gas mixture is maintained with $\pm 2\%$ of the full scale mixture setting. Mixture accuracy is unaffected by variations in inlet pressure, outlet pressure or flow rate.

INDUSTRIAL STANDARD CAPACITY MIXERS - 180 scfh

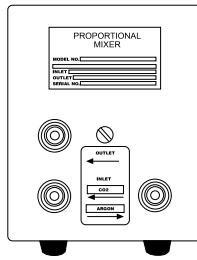
MODEL	GASES	ADJUSTMENT RANGE	MODEL	GASES	ADJUSTMENT RANGE
MX1	Argon & CO ₂	0-100% - 100-0%	MX14	Air & Helium	0-100% - 100-0%
MX2	Argon & Oxygen	0-100% - 100-0%	MX15	Air & Oxygen	0-100% - 100-0%
MX3	Argon & Helium	0-100% - 100-0%	MX17	Helium & Hydrogen	85-100% - 15-0%
MX4	Argon & Hydrogen	50-100% - 50-0%	MX18	Nitrogen & CO ₂	0-100% - 100-0%
MX5	Argon & Helium	50-100% - 50-0%	MX19	Nitrogen & Hydrogen	50-100% - 50-0%
MX6	Argon & Hydrogen (Max 50 SCFH)	50-100% - 50-0%	MX20	Nitrogen & Oxygen	0-100% - 100-0%
MX12	Argon & CO ₂	80-100% - 20-0%			
MX13	Argon & Oxygen	85-100% - 15-0%			

INDUSTRIAL HIGH CAPACITY MIXER - 700 scfh

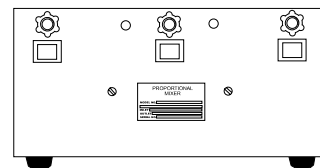
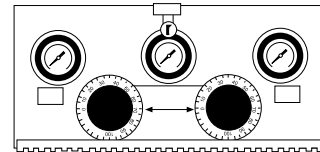
MODEL	GASES	ADJUSTMENT RANGE	MODEL	GASES	ADJUSTMENT RANGE
MX7	Argon & CO ₂	0-100% - 100%-0	MX10	Argon & Helium	0-100% - 100%-0
MX8	Argon & Oxygen	80-100% - 100%-0	MX11	Nitrogen & CO ₂	0-100% - 100%-0
MX9	Oxygen & CO ₂	0-100% - 100%-0%			



180 scfh Model



700 scfh Model



This document was created with Win2PDF available at <http://www.win2pdf.com>.
The unregistered version of Win2PDF is for evaluation or non-commercial use only.
This page will not be added after purchasing Win2PDF.