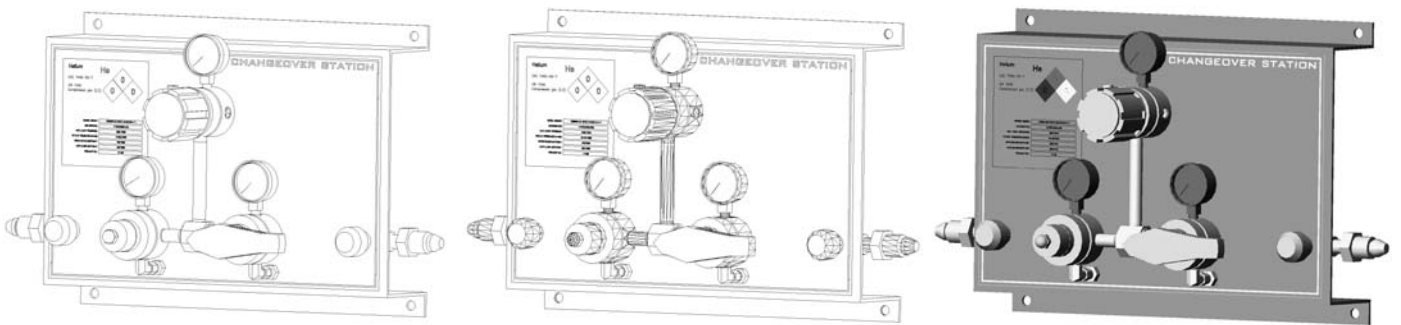


## Manifolds & Discharging Stations for High Purity Applications



Innovative solutions for all your gas delivery needs

## Table of Contents

<b>Manifold Features</b>	Page 3
Aluminum Mounting Panel	
Flexible Hoses	
Nametag	
Sticker	
Customized Equipment	
<b>Standard Configurations</b>	Page 3
Hydrogen & Helium Flexible Hoses	
Acetylene Service Equipment	
Oxygen Service Equipment	
<b>Typical Installations :</b>	
Gas Chromatography	Page 4
Inductively Coupled Plasma	Page 5
<b>CS3000</b>	
Automatic Changeover Stations	Page 6
Technical Specifications	Page 7
<b>SA3350</b>	
Semi-Automatic Changeover Stations	Page 8
Technical Specifications	Page 9
<b>MC3000</b>	
Manual Changeover Protocol Stations	Page 10
Technical Specifications	Page 11
<b>PS3000</b>	
Protocol Stations	Page 12
Technical Specifications	Page 13
<b>SM3000</b>	
Simplex Manifolds	Page 14-15-16
Technical Specifications	Page 17
<b>DP3000</b>	
Delivery Panels	Page 18
Technical Specifications	Page 19

## Industry Standards

Western manufactures and distributes equipment for the storage, control, and transmission of high pressure gases. In addition to the high purity gas equipment contained in this catalog, Western offers a complete line of gas control products for industrial, medical, and helium market applications.

## Ordering Information

To place an order, please call your gas equipment wholesaler. For more information on specific products, contact Western Customer Service at 1-800-783-7890.

*Note: If any questions should arise as to the safety or application for Western products, Western Enterprises' product design engineering department will evaluate the requirements and make recommendations based on known regulatory information. User/installer is responsible for insuring installation has been done in accordance with local codes.*

## Warranty

Western warrants to the purchaser that the products delivered to the purchaser will be free from manufactured defects in material and workmanship.

**This catalog is for informational purposes. Specific information regarding the use of these products is contained in the operating instructions provided with each product or on the product packaging.**

# Manifold Features

## CUSTOMIZED EQUIPMENT

The part number matrix allows you to tailor our equipment to your needs and not the other way around! If you are not sure about your selection, just give us a call, our knowledgeable and responsive people will guide you through!

## FLEXIBLE HOSES

Flexible hose selection is critical to get the best from your manifold. We offer three innercore materials:

- Thermoplastics
- Teflon
- Stainless Steel

For additional safety, stainless steel hoses can come with:

- armor guard

As a standard feature, each hose has:

- a check valve in the CGA nipple
- an elbow to avoid kinking of the hose (installed when judged necessary)
- an adaptor to the outlet to ease connection to the manifold

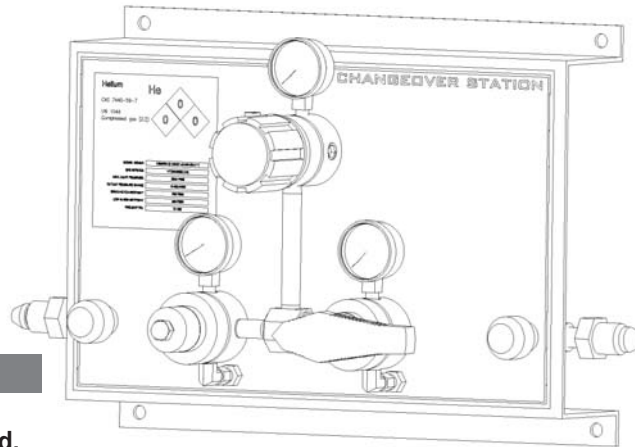
Finally, we offer three cylinder hose connections (all CGA / gas related)

- standard CGA nut & nipple
- quick connects (zip nuts)
- hand tight nuts

## ALUMINUM MOUNTING PANEL

Our equipment is mounted on an aluminum panel with a lexan sticker:

- hides and protects pressure switches, tubing and alarm wires
- no more rust or paint chipping
- easy wall or stand mounting



## NAMETAG

Each equipment bears a nametag telling you important information about:

- gas service
- alarm setpoints
- delivery pressure
- year of manufacture
- model number
- switchover setpoint
- CAS number
- UN number
- Hazardous levels

## STICKER

Standard Western Lexan sticker colours are:

- Background: Burgundy
- Letters: White
- Trim: Gold

# Standard Configurations

## HYDROGEN & HELIUM FLEXIBLE HOSES

Helium and hydrogen are very small molecules that permeate through Teflon and Nylon. All Western gas cylinder stationary discharging stations are mounted with stainless steel hoses on helium and hydrogen service.

## ACETYLENE SERVICE EQUIPMENT

In order to comply with CGA and NFPA requirements, acetylene service flexible hoses are mounted with both dry flashback arrestors and check valves. The gas delivery system designer is responsible to select the proper line flashback arrestor to be mounted at the outlet of the gas discharging station.

## OXYGEN SERVICE EQUIPMENT

All oxygen service equipment made by Western is cleaned as per the requirements of CGA G-4.1-1996. The flexible hoses installed on oxygen service discharging stations are Teflon innercore, stainless steel overbraid with brass end connections.



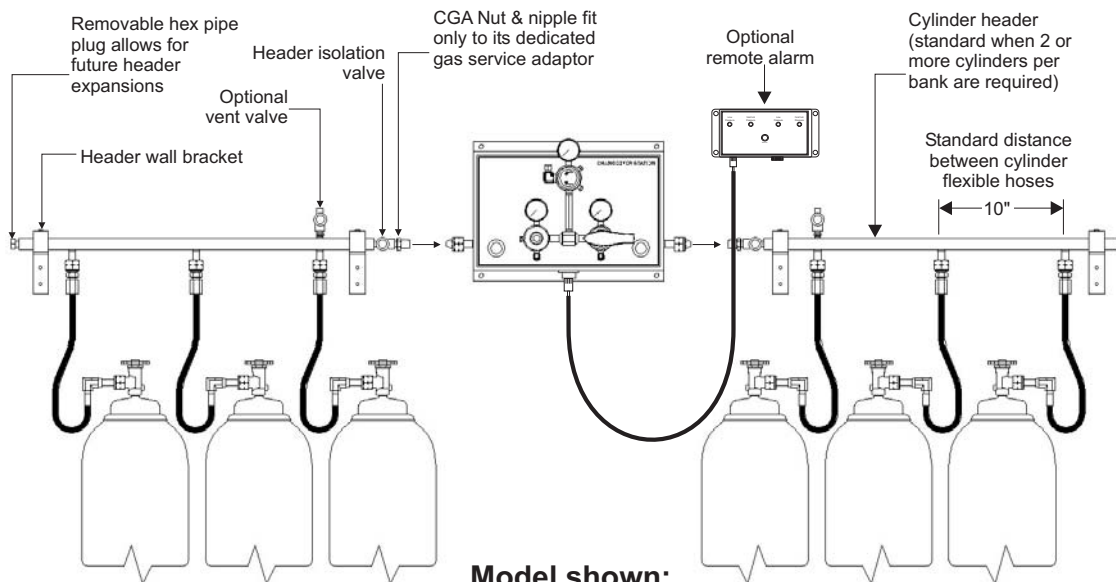




# AUTOMATIC CHANGEOVER STATIONS

## CS3000 SERIES

### MODEL SHOWN WITH MULTIPLE-CYLINDER HEADERS



**Model shown:**  
CS3000-7-150-B1-3-3-NH-VV-RA2

### Description

The CS3000 Series Automatic Changeover Stations are designed to provide a continuous supply of high purity gases. The system automatically changes from a depleted bank of cylinders in service to the full reserve bank without an interruption of gas supply. A simple rotation of the primary bank knob resets the unit once the depleted bank of cylinders has been replaced. The standard outlet regulator maintains a constant line pressure, even during the changeover process. The optional remote alarm box indicates when the pressure of each bank is either normal or low.

### Standard features

- **High purity:** Equipment components are designed, cleaned, and built to maintain gas purity
- **Wide selection of regulators and hoses:** Customized equipment to suit any application.
- **Mounting panel:** Professional look, easy installation
- **Integral check valve in the flexible hoses:** Keep air and airborne contaminants from entering the high purity distribution system during cylinder changeouts
- **Optional remote alarm:** Provides an audible and visual indication when a bank of cylinders is depleted
- **Optional vent valve:** Evacuates impurities from the system

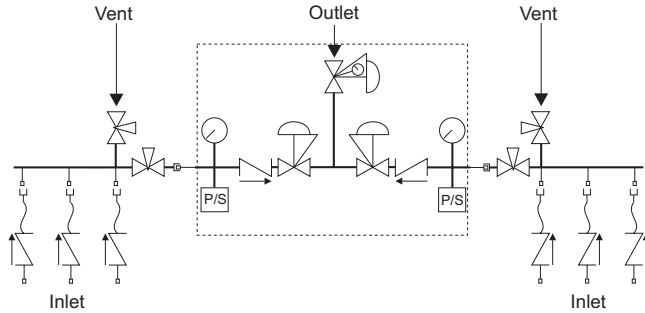
### How to order - part number matrix

CS3000							
Series	Typical fluid	Outlet pressure	Regulator	Left bank	Right bank	Flexible hoses	Options
<b>(inlet pressure)</b>							
Standard Series	<ul style="list-style-type: none"> <li>■ Air = 2</li> <li>■ Helium = 5</li> <li>■ Hydrogen = 6</li> <li>■ Nitrogen = 7</li> </ul>	<ul style="list-style-type: none"> <li>■ 1-15 = 15</li> <li>■ 2-25 = 25</li> <li>■ 2-50 = 50</li> <li>■ 5-100 = 100</li> <li>■ 5-150 = 150</li> <li>■ 10-250 = 250</li> <li>■ 30-500 = 500</li> </ul>	<ul style="list-style-type: none"> <li>■ Brass = B1 regulators</li> <li>■ Stainless = S1 steel regulators</li> </ul>	No. of cylinders (maximum 6 per side)		<ul style="list-style-type: none"> <li>■ Thermoplastic = NH (Nylon) steel fittings</li> <li>■ Teflon core, = TH brass fittings, S/Steel braid</li> <li>■ All stainless = SH steel</li> </ul>	<ul style="list-style-type: none"> <li>■ Standard alarm = RA2</li> <li>■ Wireless alarm = RF2</li> <li>■ Vent valve = VV</li> <li>■ Hose armor guard = AG</li> <li>■ Zipnut Q/C = QC</li> <li>■ Hand tight nut = HT</li> </ul>
Optional Series	Most specialty gases can be specified including acetylene and other LPG	Other: please specify					
<ul style="list-style-type: none"> <li>■ 3500 psi = CS3000</li> <li>■ 350 psi = CS350 for combustible gases</li> <li>■ 4500 psi = CS4500</li> <li>■ 6000 psi = CS6000</li> </ul>							

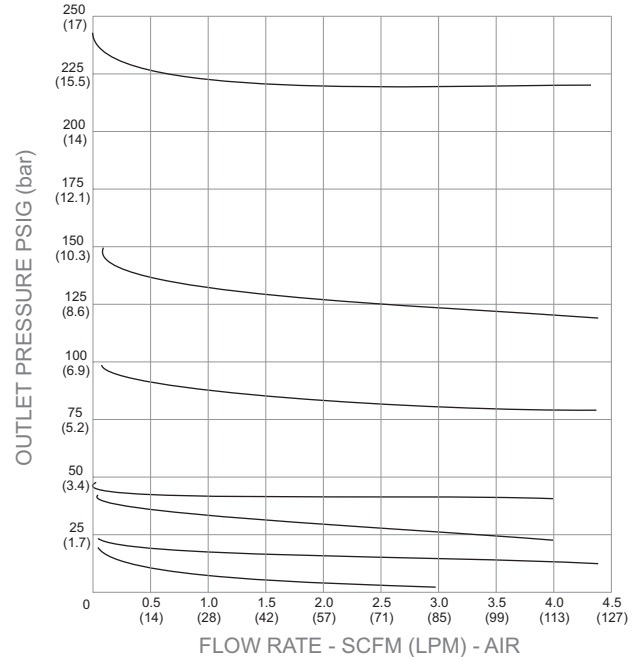


# AUTOMATIC CHANGEOVER STATIONS CS3000 SERIES TECHNICAL SPECIFICATIONS

**Flow schematic**



**Flow chart**



## Standard Specifications and Materials of Constructions

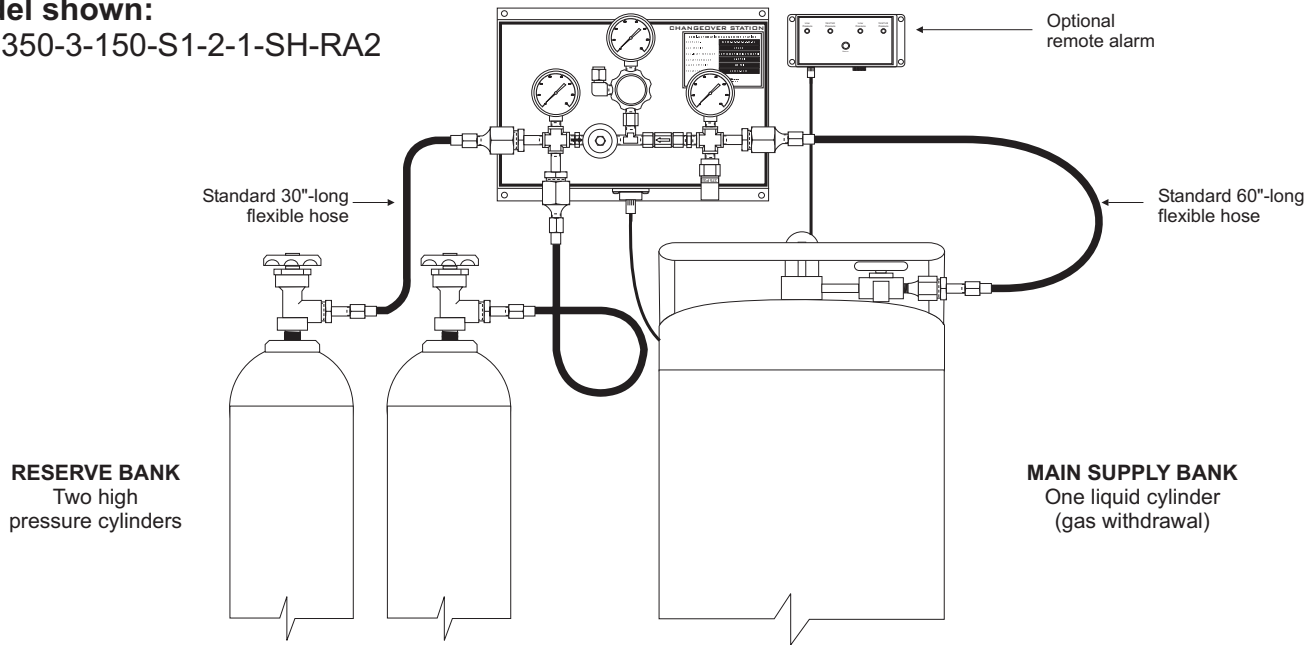
Model	CS3000 Series Brass construction	CS3000 Series All stainless steel construction
Maximum inlet pressure	3000 psig	3000 psig
Outlet pressure range	See part number matrix	See part number matrix
Inlet connection fitting	Gas related brass CGA nut & nipple	Gas related Type 316 stainless steel CGA nut & nipple
Gas service outlet connection	1/4" compression S/S	1/4" compression S/S
Vent valve outlet connection	1/4" M.NPT	1/4" M.NPT
Operating temperature	-40°F to 140°F	-40°F to 140°F
Pressure gauge dial & material	2"-dial, brass	2"-dial, type 316 stainless steel
Fitting size & material	1/4" NPS, brass	1/4" NPS, Type 316 stainless steel
Pressure regulator		
Body	Brass bar stock	Type 316L stainless steel bar stock
Diaphragm	Type 316L stainless steel	Type 316L stainless steel
Filter	10-micron Nickel-plated sintered bronze	40-micron Type 316L stainless steel
Seats	PCTFE	PCTFE
Seals	Teflon	Teflon
Vent valves		
Body	Forged brass UNS 37700	Type 316 stainless steel
Seats	Nylon, Zytel 101 or Celanese 1000-1	PFA
Seals	Virgin Teflon	PFA



# SEMI-AUTOMATIC CHANGE OVER STATIONS

## SA3350 SERIES

**Model shown:**  
SA3350-3-150-S1-2-1-SH-RA2



### Description

The SA3350 Series Semi-Automatic Changeover Stations are designed to provide a back-up gas supply from high pressure gas cylinders where liquid cylinders are the primary source of high purity gases. The system activates the reserve bank when the liquid cylinder pressure drops below the preset pressure and deactivates when the liquid cylinder pressure rises above the preset pressure. Monitoring or operator adjustments are not required during the reserve bank activation or deactivation. The standard outlet regulator maintains constant line pressure even during the changeover process. The optional remote alarm box indicates when the pressure of each bank is either normal or low.

### Standard features

- **High purity:** Equipment components are designed, cleaned, and built to maintain gas purity
- **Wide selection of regulators and hoses:** Customized equipment to suit any application
- **Mounting panel:** Professional look, easy installation
- **Integral check valve in the flexible hoses:** Keep air and airborne contaminants from entering the high purity distribution system during cylinder changeouts
- **Optional remote alarm:** Provides an audible and visual indication when a bank of cylinders is depleted
- **Optional vent valve:** Evacuates impurities out of the system

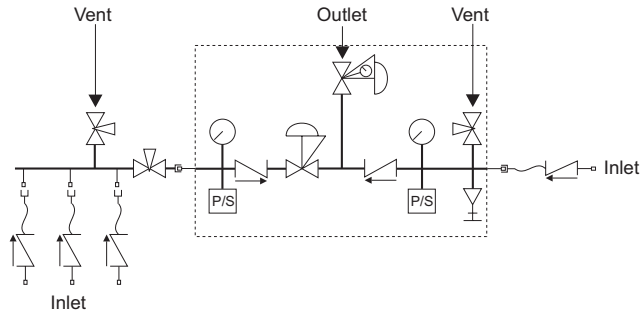
### How to order - part number matrix

SA3350							
<b>Series (inlet pressure)</b> Standard Series ■ = SA3350 3000 psi (Reserve) 350 psi (Liq. Cyl.)	<b>Fluid</b> ■ Argon = 3 ■ Carbon Dioxide = 4 ■ Nitrogen = 7 ■ Oxygen = 9	<b>Outlet pressure</b> ■ 1-15 = 15 ■ 2-25 = 25 ■ 2-50 = 50 ■ 5-100 = 100 ■ 5-150 = 150 Other: please specify	<b>Regulator</b> ■ Brass = B1 regulators ■ Stainless = S1 steel regulators	<b>High pressure bank (Max. 6)</b>	<b>Liquid cylinder bank (Max. 2)</b>	<b>Flexible hoses</b> ■ Thermoplastic = NH (Nylon) steel fittings ■ Teflon core, brass fittings, S/Steel braid = TH ■ All stainless steel = SH	<b>Options</b> ■ Standard alarm = RA2 ■ Wireless alarm = RF2 ■ Vent valve = VV ■ Hose armor guard = AG ■ Zipnut Q/C = QC ■ Hand tight nut = HT

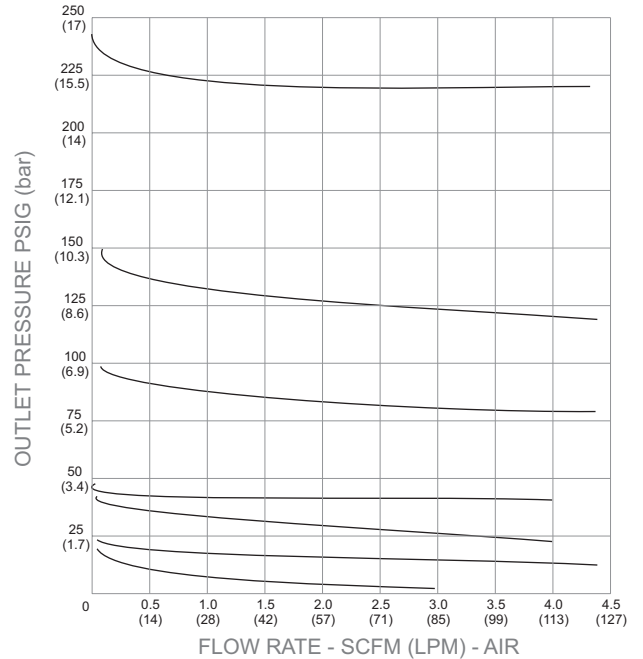


# SEMI-AUTOMATIC CHANGEOVER STATIONS SA3350 SERIES TECHNICAL SPECIFICATIONS

**Flow schematic**



**Flow chart**



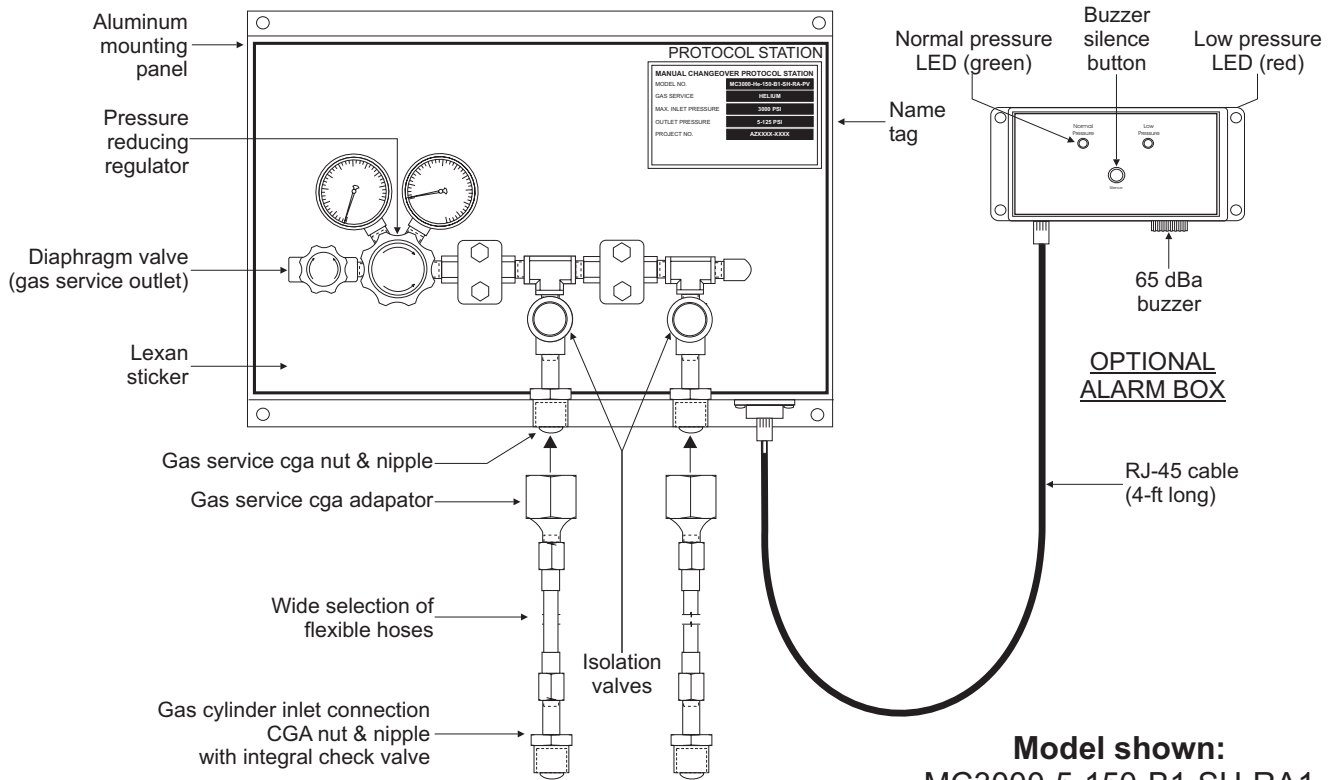
## Standard specifications and materials of construction

Model	SA3350 Series Brass construction	SA3350 Series All stainless steel construction
Maximum inlet pressure	Left: 3000 psig / Right: 350 psig	Left: 3000 psig / Right: 350 psig
Outlet pressure range	See part number matrix	See part number matrix
Inlet connection fitting	Gas related brass CGA nut & nipple	Gas related type 316 stainless steel CGA nut & nipple
Gas service outlet connection	1/4" compression S/S	1/4" compression S/S
Vent valve outlet connection	1/4" M.NPT	1/4" M.NPT
Operating temperature	-40°F to 140°F	-40°F to 140°F
Pressure gauge dial & material	2"-dial, brass	2"-dial, type 316 stainless steel
Fitting size & material	1/4" NPS, brass	1/4" NPS, type 316 stainless steel
Pressure regulator		
Body	Brass bar stock	Type 316L stainless steel sar stock
Diaphragm	Type 316L stainless steel	Type 316L stainless steel
Filter	10-micron Nickel-plated sintered bronze	40-micron Type 316L stainless steel
Seats	PCTFE	PCTFE
Seals	Teflon	Teflon
Vent valves		
Body	Forged brass UNS 37700	Type 316 stainless steel
Seats	Nylon, Zytel 101 or Celanese 1000-1	PFA
Seals	Virgin Teflon	PFA



# MANUAL CHANGEOVER PROTOCOL STATIONS

## MC3000 SERIES



**Model shown:**  
MC3000-5-150-B1-SH-RA1

### Description

The MC3000 Series Manual Changeover Stations allow manual switching between a primary cylinder and a reserve cylinder. By closing the depleted cylinders isolation valve and opening the reserve (full) isolation valve, you perform cylinder changeouts without gas supply interruption. The check valves in the flexible hoses prevent back flow from the full to the empty cylinder. The optional remote alarm will provide an audible and visual warning when a cylinder is near depletion.

### Standard features

- **High purity:** Equipment components are designed, cleaned, and built to maintain gas purity
- **Wide selection of regulators and hoses:** Customized equipment to suit any application
- **Mounting panel:** Professional look, easy installation
- **Integral check valve in the flexible hoses:** Keep air and airborne contaminants from entering the high purity distribution system during cylinder changeouts
- **Optional remote alarm:** Provides an audible and visual indication when a bank of cylinders is depleted
- **Optional vent valve:** Evacuates impurities out of the system

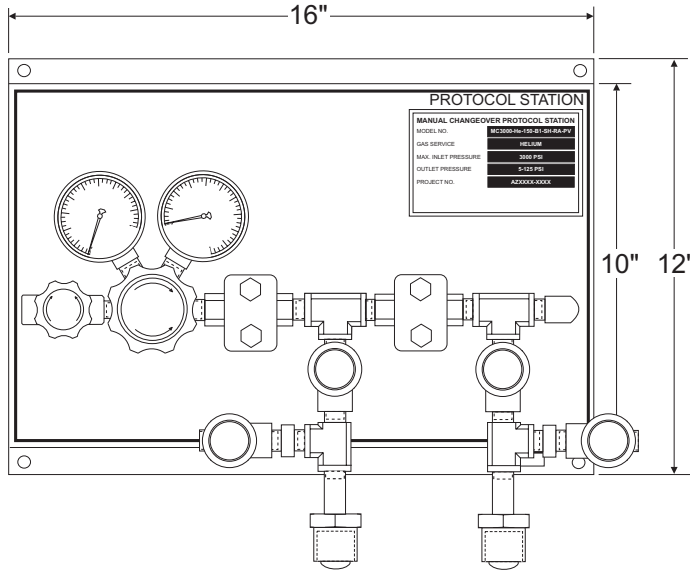
### How to order - part number matrix

MC3000					
<b>Series (inlet pressure)</b>	<b>Typical fluid</b>	<b>Outlet pressure</b>	<b>Regulator</b>	<b>Flexible hoses</b>	<b>Options</b>
Standard series	■ Air = 2	■ 1-15 = 15	■ Brass / single-stage = B1	■ Thermoplastic (Nylon) = NH	■ Standard alarm = RA1
■ 3000 psi = PS3000	■ Nitrogen = 7	■ 2-30 = 30	(standard regulator)	■ Steel fittings = TH	■ Wireless alarm = RF1
Optional series	■ Helium = 5	■ 4-75 = 75	■ Brass / Two-stage = B2	■ Teflon innercore, SS braid, brass fittings = SH	■ Vent valve = VV
■ 4500 psi = PS4500	■ Hydrogen = 6	■ 10-150 = 150	■ SS / single-stage = S1	■ Stainless steel innercore, overbraid & fittings = SH	■ Hose armor guard = AG
■ 6000 psi = PS6000	most specialty gases can be specified including acetylene and LPG	■ 20-300 = 300	■ SS / two-stage = S2		■ Zipnut Q/C = QC
		■ 30-500 = 500			■ Hand tight nut = HT
		Other: please specify			



# MANUAL CHANGEOVER PROTOCOL STATIONS MC3000 SERIES TECHNICAL SPECIFICATIONS

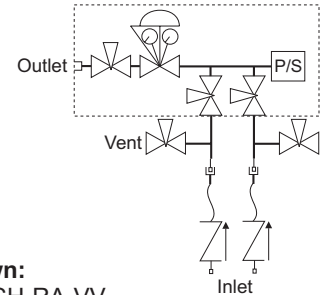
## Dimensional Drawing



Front View

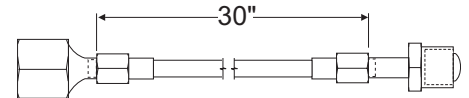
Approximate Dimensions

## Flow schematic



Model shown:  
MC3000-5-150-B1-SH-RA-VV

## Typical Flexible Hose



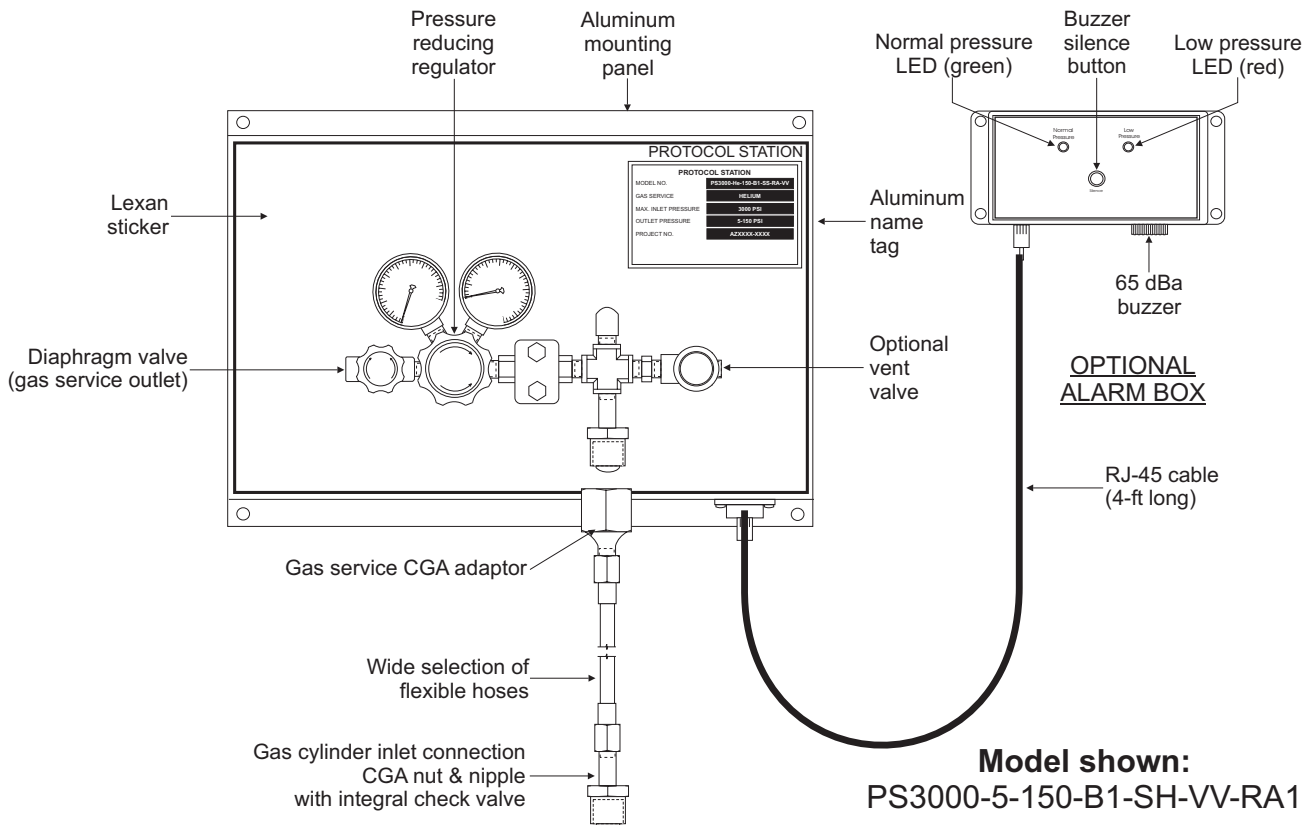
## Standard specifications and materials of construction

Model	MC3000 Series Brass construction	MC3000 Series All Stainless Steel Construction
Maximum inlet pressure	3000 psig	3000 psig
Outlet pressure range	See part number matrix	See part number matrix
Inlet connection fitting	Gas related brass CGA nut & nipple	Gas related type 316 stainless steel CGA nut & nipple
Gas service outlet connection	1/4" F.NPT	1/4" F.NPT
Vent valve outlet connection	1/4" M.NPT	1/4" M.NPT
Operating temperature	-40°F to 140°F	-40°F to 140°F
Pressure gauge dial & material	2"-dial, brass	2"-dial, type 316 stainless steel
Fitting size & material	1/4" NPS, brass	1/4" NPS, type 316 stainless steel
Pressure regulator & outlet valve		
Body	Brass bar stock	Type 316L stainless steel bar stock
Diaphragm	Type 304 stainless steel	Type 316L stainless steel
Filter	10-micron	40-micron
Seats	Nickel-plated sintered bronze	Type 316L stainless steel
Seals	PCTFE	PCTFE
Seals	Teflon	Teflon
Vent valve		
Body	Forged brass UNS 37700	Type 316 stainless steel
Seats	Nylon, Zytel 101 or Celanese 1000-1	PFA
Seals	Virgin Teflon	PFA



# PROTOCOL STATIONS

# PS3000 SERIES



**Model shown:**  
PS3000-5-150-B1-SH-VV-RA1

## Description

The PS3000 Series Protocol Station is a convenient and safe way to panel mount any type of regulator, its flexible hose and an optional remote alarm. This regulator panel concept eases cylinder changeouts, prevents regulator damage, and allows the addition of options such as vent valves and alarms. The check valve in the flexible hose minimizes the introduction of air and airborne contaminants into the system. The optional remote alarm will provide an audible and visual warning when the cylinder is near depletion.

## Standard features

- **High purity:** Equipment components are designed, cleaned, and built to maintain gas purity
- **Wide selection of regulators and hoses:** Customized equipment to suit any application
- **Mounting panel:** Professional look, easy cylinder changeouts, prevents cylinder damages
- **Integral check valve in the flexible hose:** Prevents system contamination
- **Optional remote alarm:** Provides an audible and visual indication when a cylinder is depleted

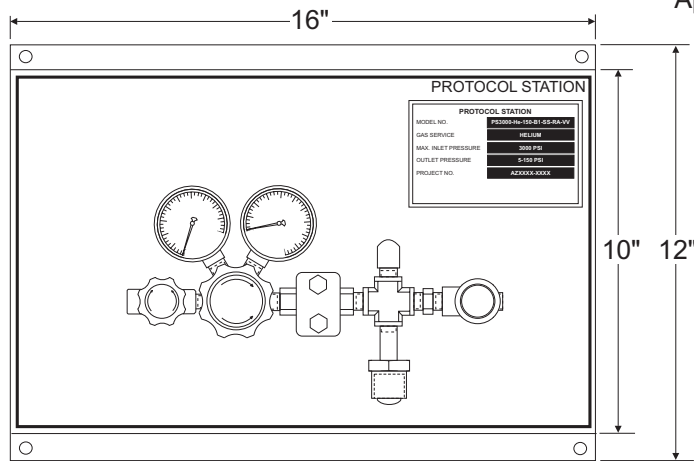
## How to order - part number matrix

PS3000					
<b>Series (inlet pressure)</b>	<b>Fluid</b>	<b>Outlet pressure</b>	<b>Regulator</b>	<b>Flexible hoses</b>	<b>Options</b>
Standard series	<ul style="list-style-type: none"> <li>■ Air = 2</li> <li>■ Nitrogen = 7</li> <li>■ Helium = 5</li> <li>■ Hydrogen = 6</li> </ul>	<ul style="list-style-type: none"> <li>■ 1-15 = 15</li> <li>■ 2-30 = 30</li> <li>■ 4-75 = 75</li> <li>■ 10-150 = 150</li> <li>■ 20-300 = 300</li> <li>■ 30-500 = 500</li> </ul>	<ul style="list-style-type: none"> <li>■ Brass / single-stage = B1 (standard regulator)</li> <li>■ Brass / two-Stage = B2</li> <li>■ SS / single-stage = S1</li> <li>■ SS / two-stage = S2</li> </ul>	<ul style="list-style-type: none"> <li>■ Thermoplastic (nylon) steel fittings = NH</li> <li>■ Teflon innercore, SS braid, brass fittings = TH</li> <li>■ Stainless steel innercore, overbraided &amp; fittings = SH</li> </ul>	<ul style="list-style-type: none"> <li>■ Standard alarm = RA1</li> <li>■ Wireless alarm = RF1</li> <li>■ Vent valve = VV</li> <li>■ Hose armor guard = AG</li> <li>■ Zipnut Q/C = QC</li> <li>■ Hand tight nut = HT</li> </ul>
Optional series	most specialty gases can be specified including acetylene and LPG	Other: Please Specify			



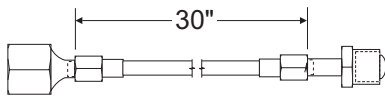
# PROTOCOL STATIONS PS3000 SERIES TECHNICAL SPECIFICATIONS

## Dimensional drawing



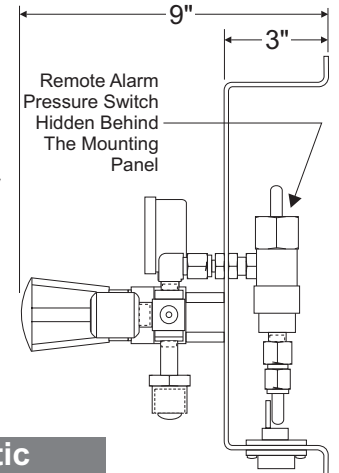
Front View

Typical Flexible Hose



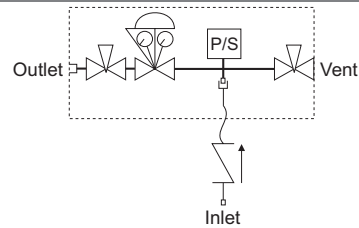
Approximate Dimensions

Model Shown:  
MC3000-He-150-B1-SH-RA-VV



Side View

## Flow schematic



## Standard specifications and material of construction

Model	PS3000 Series Brass construction	PS3000 Series All stainless steel construction
Maximum inlet pressure	3000 psig	3000 psig
Outlet pressure range	See part number matrix	See part number matrix
Inlet connection fitting	Gas related brass CGA nut & nipple	Gas related type 316 stainless steel CGA nut & nipple
Gas service outlet connection	1/4" F.NPT	1/4" F.NPT
Vent valve outlet connection	1/4" M.NPT	1/4" M.NPT
Operating temperature	-40°F to 140°F	-40°F to 140°F
Pressure gauge dial & material	2"-dial, brass	2"-dial, type 316 stainless steel
Fitting size & material	1/4" NPS, brass	1/4" NPS, type 316 stainless steel
Pressure regulator & outlet valve		
Body	Brass bar stock	Type 316L stainless steel bar stock
Diaphragm	Type 304 stainless steel	Type 316L stainless steel
Filter	10-micron	40-micron
Seats	Nickel-plated sintered bronze	Type 316L stainless steel
Seals	PCTFE	PCTFE
Seals	Teflon	Teflon
Vent valve		
Body	Forged brass UNS 37700	Type 316 stainless steel
Seats	Nylon, Zytel 101 or Celanese 1000-1	PFA
Seals	Virgin Teflon	PFA



# SIMPLEX MANIFOLDS

# SM3000 SERIES

## Description

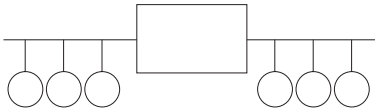
The SM3000 Series Simplex Manifolds are designed, built and cleaned to regulate high purity gas cylinders. Simplex manifolds are primarily used in applications not requiring an uninterrupted supply of gas. There are two (2) basic designs; "Simplex Center" and "Simplex Left". We offer a wide selection of pressure reducing regulators and several options, such as remote alarms.

## Standard features

- High purity: Equipment components are designed, cleaned, and built to maintain gas purity
- Wide selection of regulators and hoses: Customized equipment to suit any application
- Two choices of configuration: Simplex Left or Simplex Center
- Integral check valve in the flexible hoses: Prevents gas from cascading to the empty cylinder during cylinder changeouts
- Optional remote alarm: Provides an audible and visual indication when cylinders are depleted

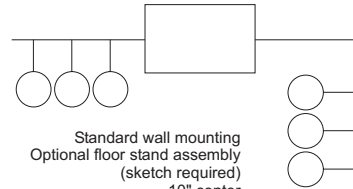
## Header configuration

### STANDARD CONFIGURATION



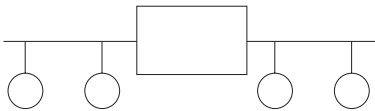
Standard wall mounting  
Floor stand optional  
10" center

### "L" SHAPED CONFIGURATION



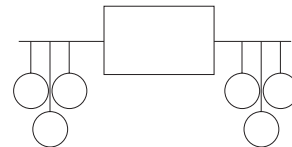
Standard wall mounting  
Optional floor stand assembly  
(sketch required)  
10" center

### LONG CONFIGURATION



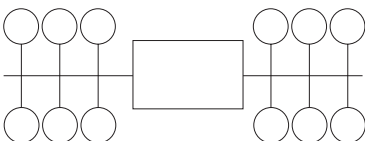
Standard wall mounting  
Floor stand optional  
15" center

### SHORT CONFIGURATION



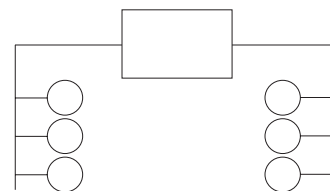
Standard wall mounting  
Floor stand optional  
5" centers

### CROSSOVER



Floor stand standard  
Wall mounting optional (sketch required)  
10" center

### "U" SHAPED CONFIGURATION



Floor stand (sketch required)  
or wall mounting (sketch required)  
10" centers

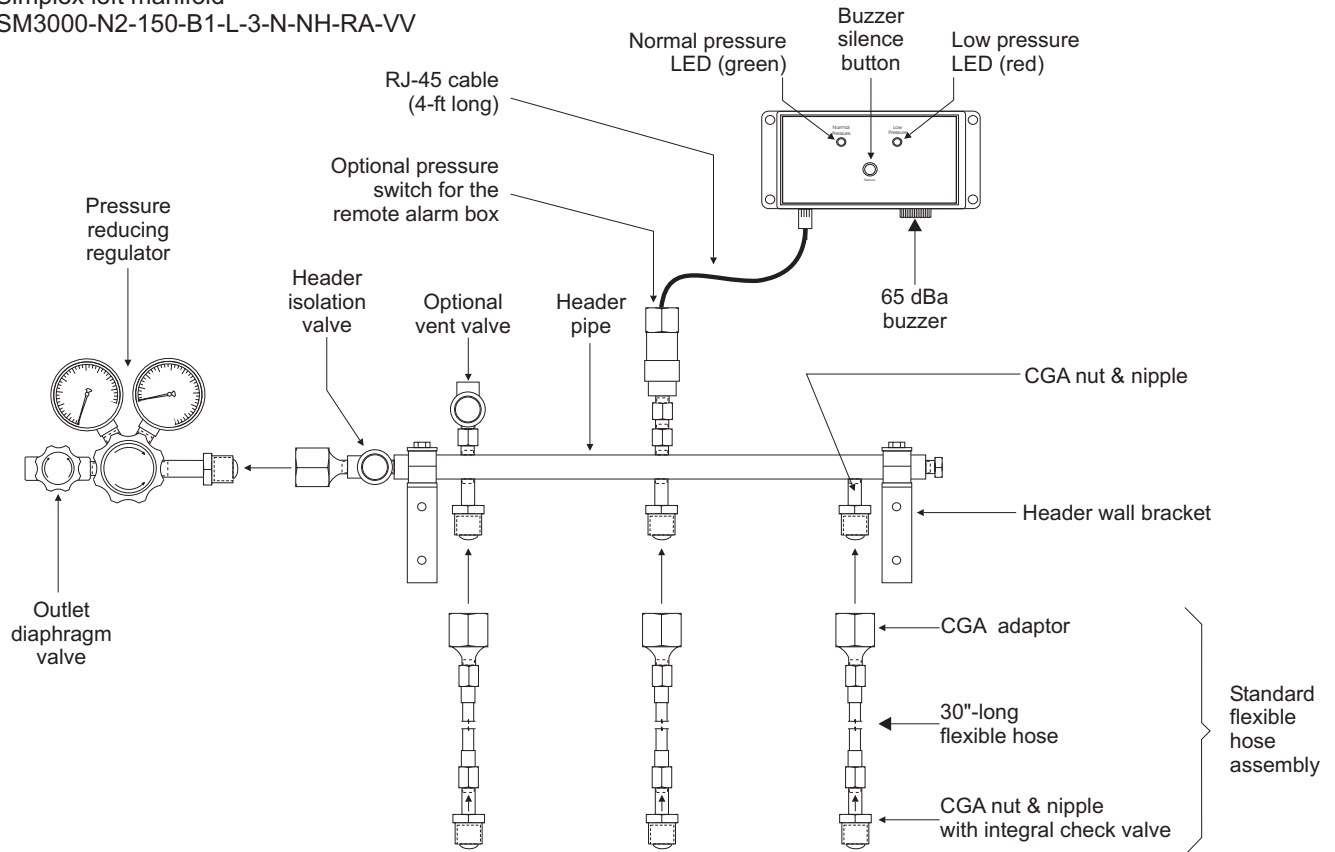


# SIMPLEX MANIFOLDS

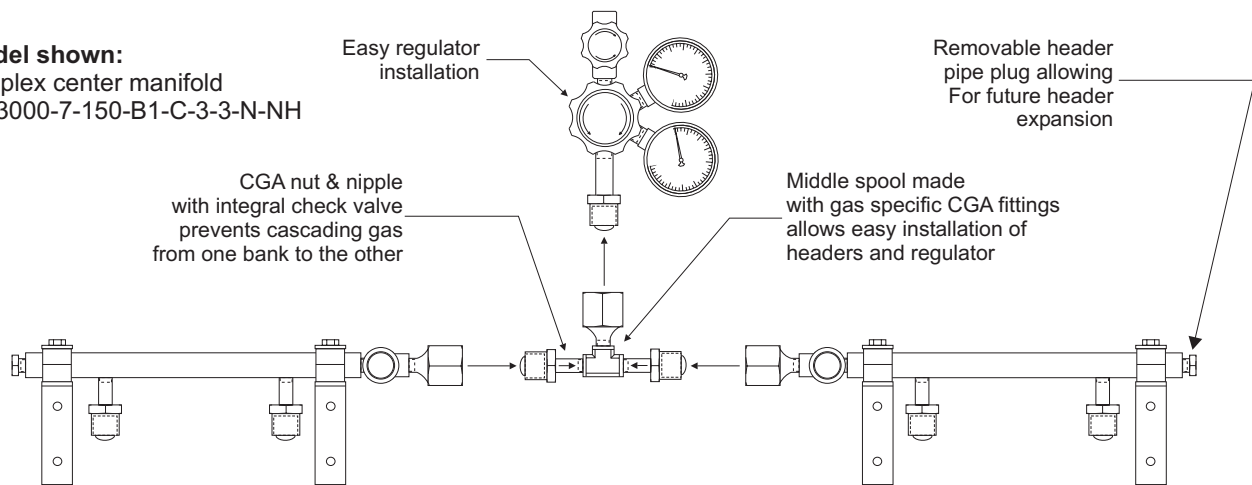
# SM3000 SERIES

**Model shown:**  
Simplex left manifold  
SM3000-N2-150-B1-L-3-N-NH-RA-VV

## OPTIONAL REMOTE ALARM BOX



**Model shown:**  
Simplex center manifold  
SM3000-7-150-B1-C-3-3-N-NH



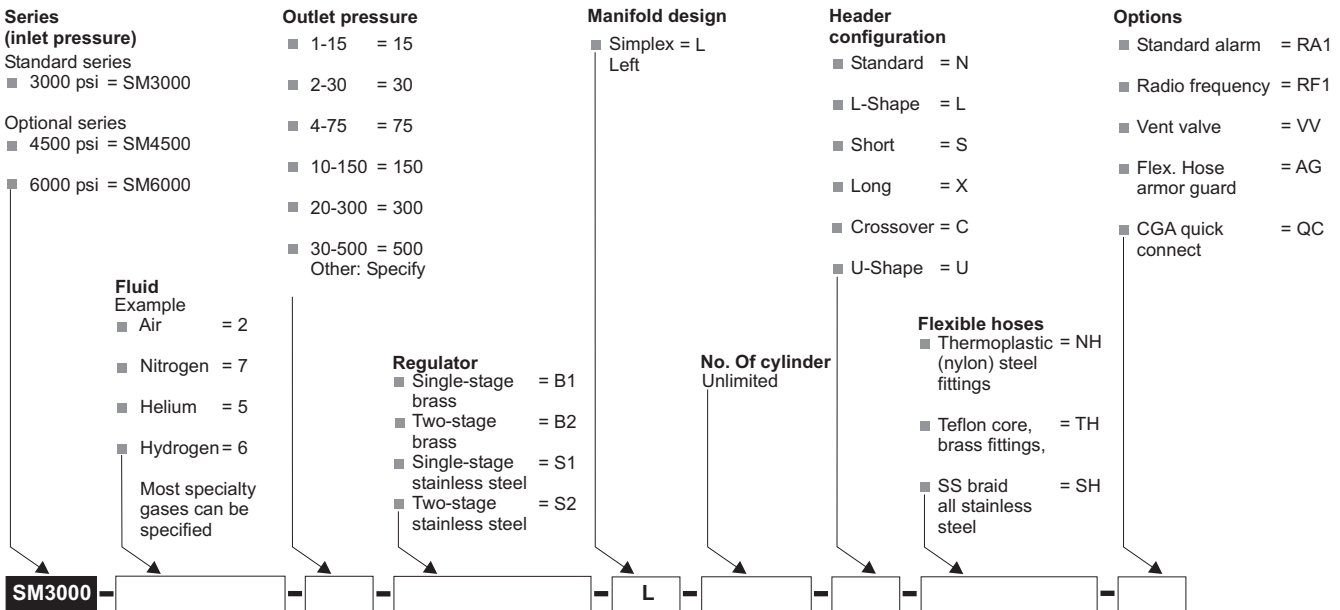


# SIMPLEX MANIFOLDS

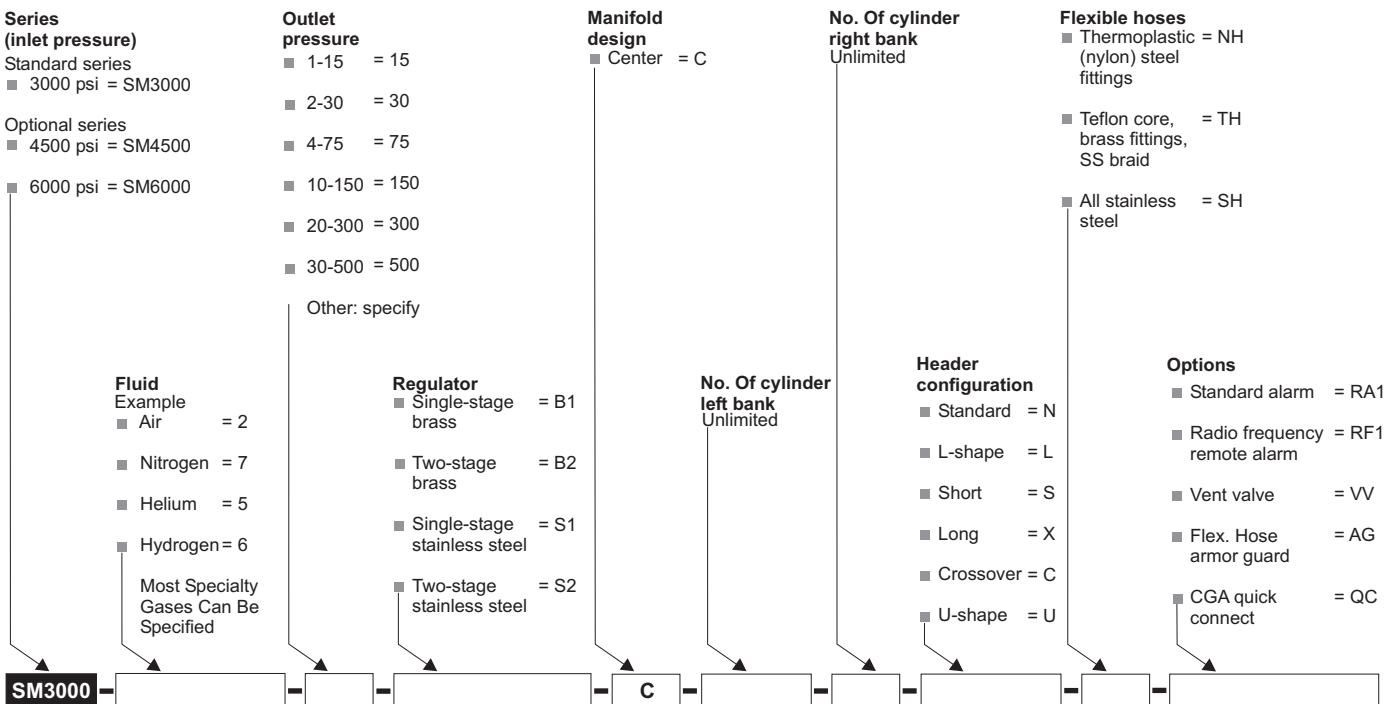
## SM3000 SERIES

### How to order - part number matrix

#### SIMPLEX LEFT MANIFOLDS



#### SIMPLEX CENTER MANIFOLDS

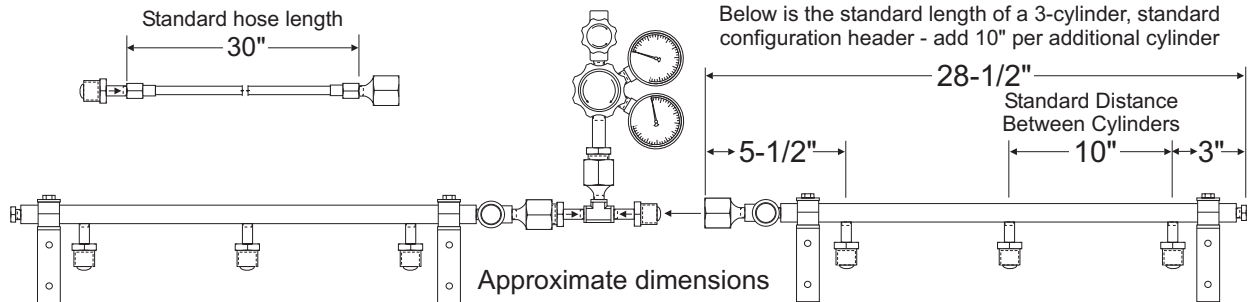


WHEN A STAINLESS STEEL REGULATOR IS SELECTED, ALL FITTINGS, GAUGES AND PRESSURE SWITCHES COME AUTOMATICALLY IN STAINLESS STEEL

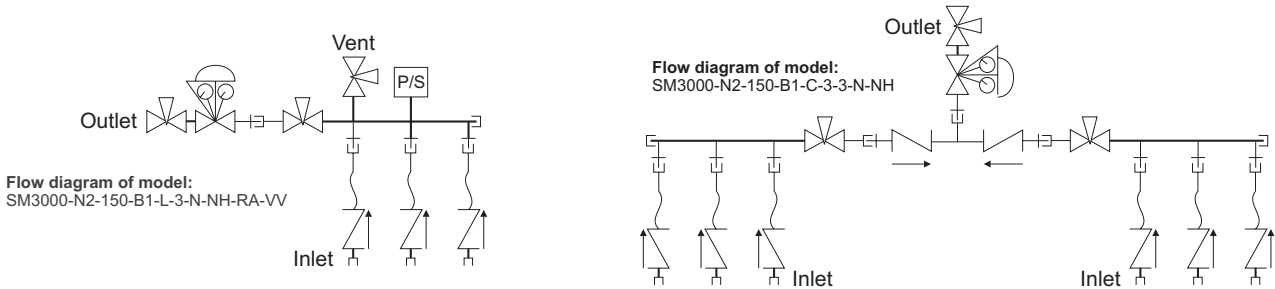


# SIMPLEX MANIFOLDS SM3000 SERIES TECHNICAL SPECIFICATIONS

## Dimensional drawing



## Flow schematic



## Standard specifications and materials of construction

Model	SM3000 series Brass construction	SM3000 series All stainless steel construction
Maximum inlet pressure	3000 psig	3000 psig
Outlet pressure range	See part number matrix	See part number matrix
Inlet connection fitting	Gas related brass CGA nut & nipple	Gas related type 316 stainless steel CGA nut & nipple
Gas service outlet connection	1/4" F.NPT	1/4" F.NPT
Vent valve outlet connection	1/4" M.NPT	1/4" M.NPT
Operating temperature	-40°F to 140°F	-40°F to 140°F
Pressure gauge dial & material	2"-dial, brass	2"-dial, type 316 stainless steel
Fitting size & material	1/4" NPS, brass	1/4" NPS, type 316 stainless steel
Pressure regulator		
Body	Brass bar stock	Type 316L stainless steel bar stock
Diaphragm	Type 304 stainless steel	Type 316L stainless steel
Filter	10-micron	40-micron
Seats	Nickel-plated sintered bronze	Type 316L stainless steel
Seals	PCTFE	PCTFE
Seals	Teflon	Teflon
Vent & isolation valves		
Body	Forged brass UNS 37700	Type 316 stainless steel
Seats	Nylon, Zytel 101 or Celanese 1000-1	PFA
Seals	Virgin Teflon	PFA



# DELIVERY PANELS

# DP3000 SERIES

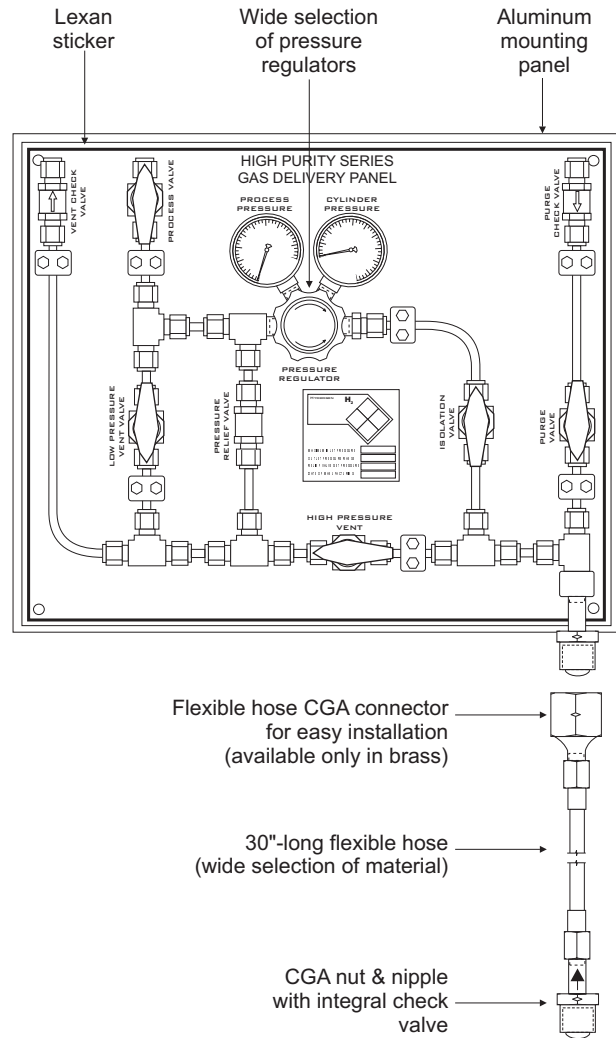
## Description

The DP3000 Gas Delivery Panels are designed to provide precise and safe delivery of gases (corrosive, toxic, flammable or inert). These panels are ideal for applications requiring high purity levels. Each panel can be mounted as a stand alone configuration or in a gas cabinet.

You can select from a wide range of panel configurations, pressure reducing regulators, valves and materials to perfectly meet your applications needs.

## Standard features

- Rust-free aluminum mounting panel with pre-drilled mounting holes
- Each gas labeled with the appropriate NFPA hazard diamond, CAS registry number, UN and DOT classifications
- Convenient name plate with operating information such as maximum inlet pressure, outlet pressure range and safety relief valve set pressure
- Panels completely assembled and tested prior to shipping
- Customizable panel to meet your applications needs and budget
- Each valve, gauge, check valve and pressure relief valve is identified on an extremely resistant Lexan sticker



**Model Shown:**  
Five-valve panel mounted with ball valves

## How to order - part number matrix

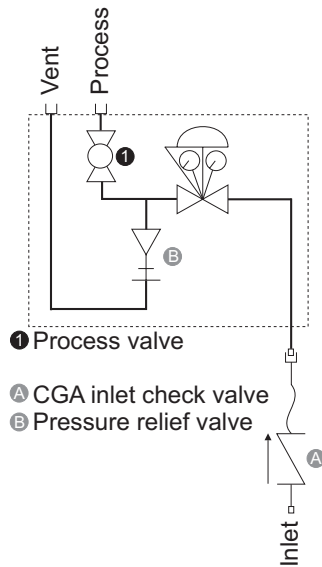
DP3000					
<b>Series (inlet pressure)</b>	<b>Fluid</b>	<b>Outlet pressure</b>	<b>Regulator</b>	<b>Flexible hoses</b>	<b>Configuration</b>
Standard series	Most Specialty gases can be specified including acetylene and LPG	■ 1-15 = 15	■ Brass / single-stage = B1	■ Thermoplastic (nylon) steel fittings = NH	■ One valve panel = V1
■ 3000 psi = DP3000		■ 2-25 = 25	■ Brass / two-stage = B2	■ Teflon innercore, SS braid, brass fittings = TH	■ Two valve panel = V2
Optional series		■ 2-50 = 50	■ SS / single-stage = S1	■ Stainless steel innercore, = SH	■ Three valve panel = V3
■ 300 psi = DP300		■ 5-100 = 100	■ SS / two-stage = S2	■ Stainless steel innercore, = SH overbraid & fittings	■ Four valve panel = V4
■ 800 psi = DP800		■ 5-150 = 150	Brass regulators are mounted with copper tubing and brass fittings		■ Five valve panel = V5
■ 4500 psi = DP4500		■ 10-250 = 250	Stainless steel regulators are mounted with stainless steel fittings and tubing		Standard valve type is ball valve. Add the suffix D to your valve configuration for diaphragm valves.
■ 6000 psi = DP6000		■ 30-500 = 500			
		Other: please specify			



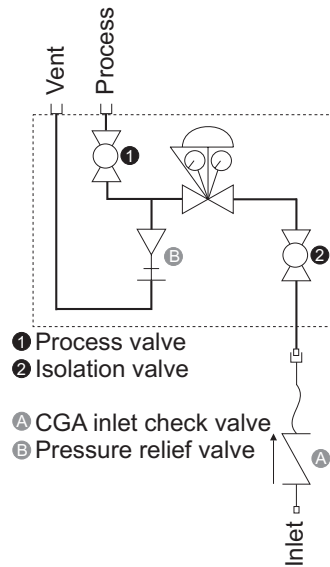
# DELIVERY PANELS DP3000 SERIES TECHNICAL SPECIFICATIONS

## Panel configurations

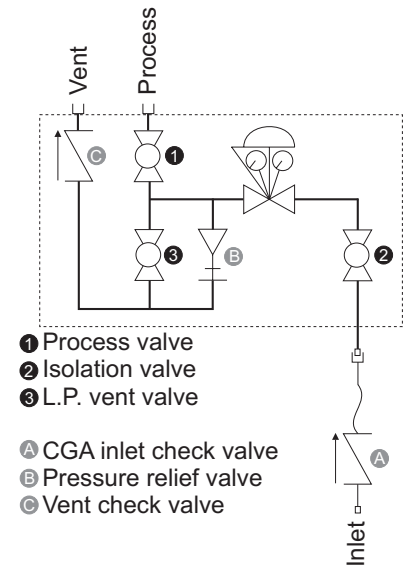
### One-valve panel



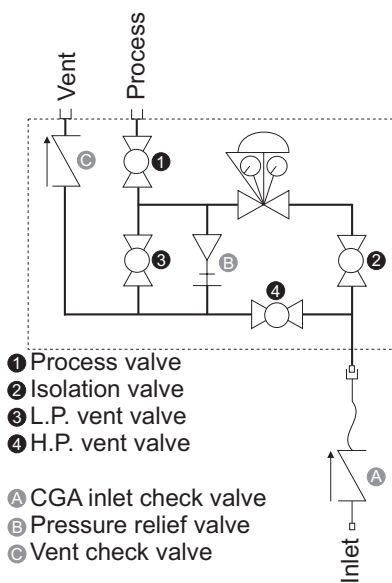
### Two-valve panel



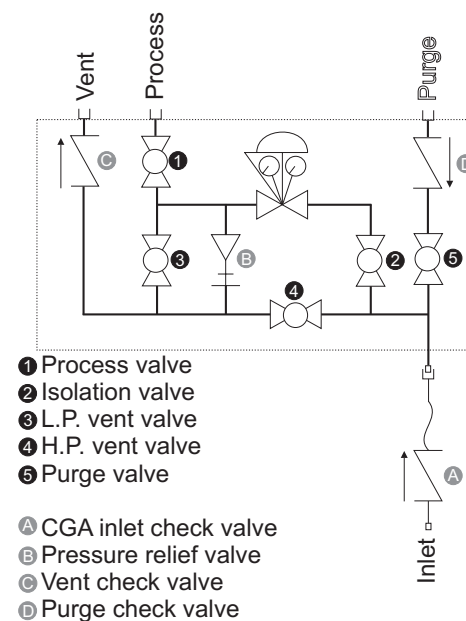
### Three-valve panel



### Four-valve panel



### Five-valve panel



### Mechanical legend

	Ball valve or diaphragm valve
	Check valve
	Pressure reducing regulator
	Pressure relief valve
	Flexible hose



## **Western Enterprises**

**875 Bassett Rd  
Westlake, Ohio 44145  
Phone: (440) 871-2160  
Toll Free: 1-800-783-7890  
Fax: (440) 835-8283**

**Web-site: [www.westernenterprises.com](http://www.westernenterprises.com)**

**Hours: Monday- Friday 8:00 AM to 5:00 PM / Eastern Standard Time**