

MOUNTING ACCESSORIES

CYLINDER BRACKETS

Single (part number WB1) and double (part number WB2) wall mount cylinder holders are an essential accessory to all manifolds. An economical bench mounted single cylinder bracket (part number HWB3) attaches quickly to any counter top up to 2" thick. For safe containment of cylinders not greater than 9" - 12" in diameter. Equipped with plated safety chain. Painted black.



WB2 Double Bracket



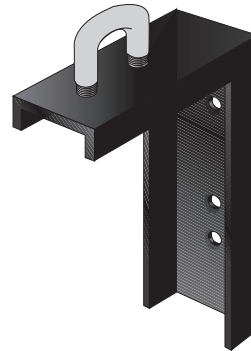
WB1 Single Bracket



HWB3 Counter Top Bracket

MANIFOLD BRACKET & MOUNTING HARDWARE

L-shaped steel wall bracket, painted black, 5/16" holes pre-drilled. Dimensions: 1 - 1/2" wide, 5 - 3/4" high and 4" deep. Zinc plated steel U-bolt, inside diameter is 1", center to center width is 1 - 3/8". Center line to mounting surface is 2 - 1/2". Includes strap and nuts.



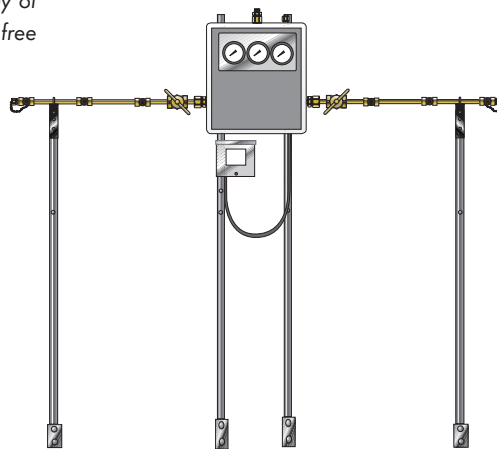
PART #	DESCRIPTION
WMC - 6 - 2	Bracket
WMC - 6 - 13B	U - bolt, Strap and Nuts
WMC - 3 - 3	Complete Assembly

FLOOR STANDS

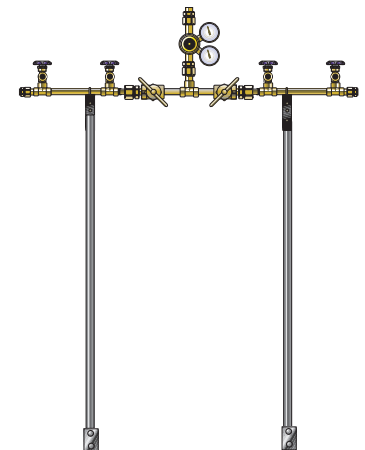
Floor stands are available as an option for use with any of Western's Manifolds. The floor stand allows for a free standing manifold unit.

Ordering Information:

When ordering a floor stand, add the letter F to the end of the manifold part number.



Cabinet Style Floor Stand



Open Style Floor Stand

